



—  
INTERIOR  
—



CARRIÈRES DU HAINAUT



# INTRO- DUCTION

## BLUE LIMESTONE OF HAINAUT, AN EXCEPTIONAL MATERIAL

Blue Limestone of Hainaut, a noble stone that will enhance any interior, be it contemporary, classic or 'cottage' style. The perfect reflection of your personality and character.

Worktops, floor coverings, walls, showers and furniture decoration... everywhere it's used this timeless stone seduces with elegance. Its refined appearance and subtle shades are evidence of a nobility that stems from 345 million years of history.

With its changing reflections, its irregularities and softened edges, Blue Limestone of Hainaut is the reflection of a cultivated taste for beauty. Naturally and decoratively outstanding, blue stone is soft to the touch, and its very versatility gives free rein to your imagination. Creating a natural harmony with wood, metal and glass, Blue Limestone of Hainaut's stylish, characterful aspect is perfectly complemented by its practical qualities - easy to clean, solid and durable. And a timelessness that makes it even more beautiful with

every season lived, adding a unique patina that's testament to the passing of the years.

Only the most beautiful of stones deserve your attention. At Carrières du Hainaut®, the selection procedures are strict, rigorous and uncompromising. Our remarkable quality label is your best guarantee.

Well-known for long for its various outdoors features, discover in this catalogue a wide range of indoors applications and possibilities. Whether you're renovating or planning a new build, be inspired by the projects you find here, and allow your imagination take wing to give your interior its very own unique character.

Would you like to know more? The 'Practically Speaking' section on page 46 should provide the answers to your first questions. You can find out more about this unique stone and its quarry on our website [carrieresduhainaut.com](http://carrieresduhainaut.com) or at one of our partners' points of sale.

PASSAGE-  
WAYS

4

LIVING  
ROOMS

12

KITCHENS

20

WATER  
FEATURES

30

ABOUT THE  
MATERIAL

40

PRACTICALLY  
SPEAKING

46

THE  
QUARRY

50

# PASSAGE- WAYS

FLOORS – STAIRWAYS – WALLS  
DECORATIVE ELEMENTS – SHELVES



Let your style shine through from the very beginning.

Blue Limestone of Hainaut offers numerous **perspectives** and **creative possibilities** to upgrade your hall, corridors, stairs and lobbies.

Set a unique tone or, on the contrary, play on **contrasts** between different spaces. The variety of **finishes**, as numerous as they are variable, offers a wide palette of interplay between light, relief and volume.

Blue Limestone of Hainaut is ideal for both floors and walls in high-traffic areas, where life and movement leave their footprint and where the effects of time are rendered invisible.







7

*A timeless material that has never been so modern...*



*Your entrance hall is the ultimate statement about you, your character and who you are. In a corporate context, the entrance hall experience reinforces your brand value among your visitors.*





*An anti-gravel lath on your entrance door will help reduce scratches on your stone floor.*



*Enhance the elegance of a Dark Blue Honed stone stairway with the added safety of a chiselled stepnose.*



## WALLS

*Add a unique character to your corridors with blue stone wainscoting in Chiselled or Charred finishes.*

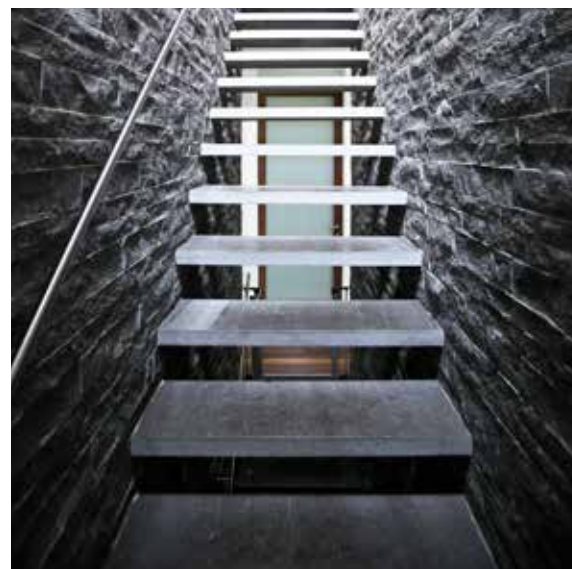
*This stone cladding is impervious to any impact marks and scratches from buggies, bicycles, trolleys, umbrellas, bags and cases, often clumsily banged along or against the walls.*



## FLOOR

*Scratches and shoe marks have no effect on textured finishes such as EnoSkin®, Flamed Blue or EnoStyl®.*

*These floors develop an agreeable patina over the years and are always safe to use, thanks to their light anti-slip finish.*



## STAIRS

*Life centres around the stairway in any building. The veritable backbone of the house, a staircase in Blue Limestone of Hainaut is the perfect complement to your interior. Use sawn freestanding slabs to add a light touch to the rock's reassuring solidity.*

# LIVING ROOMS

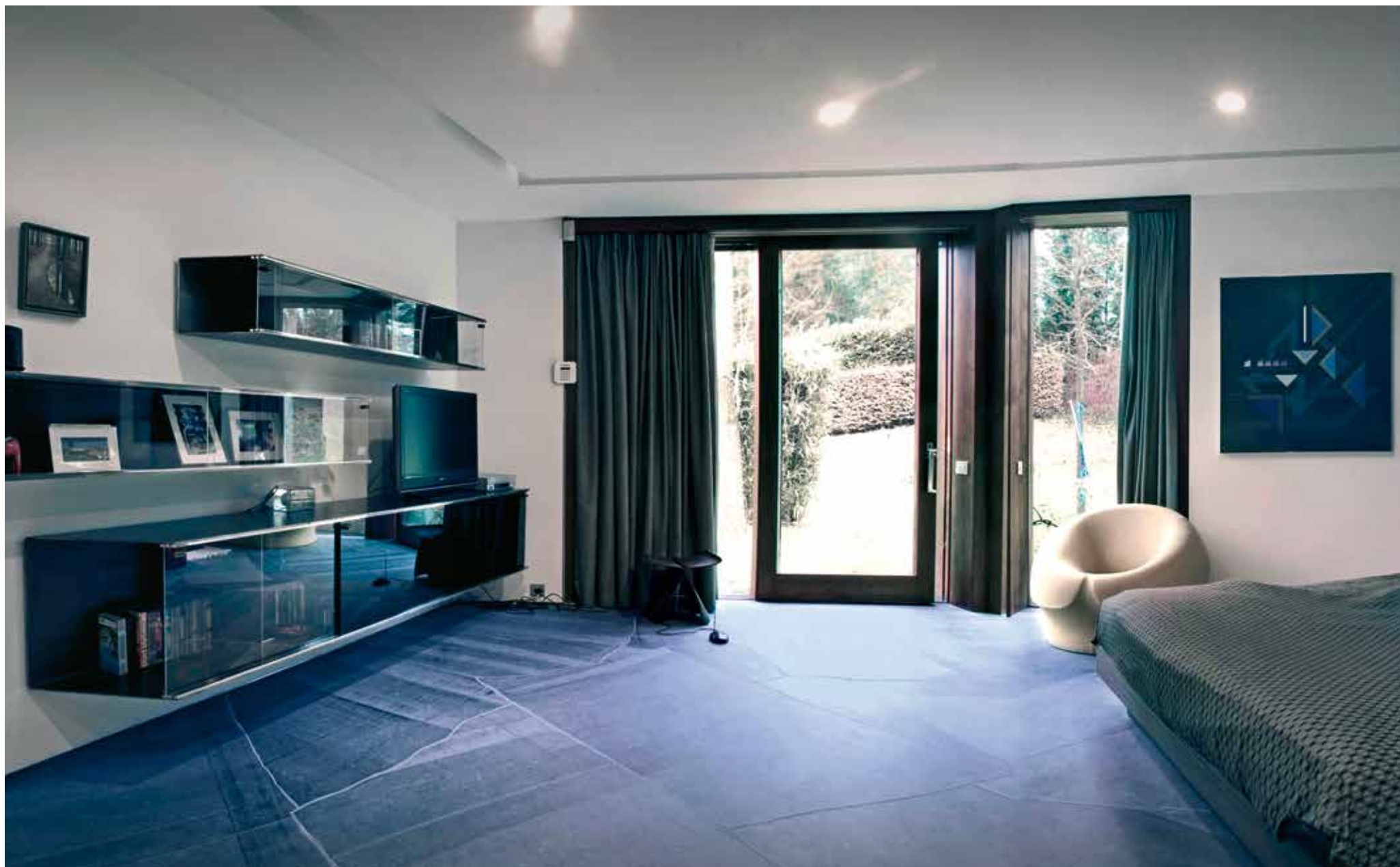
FLOORS – WALLS – CHIMNEYS – FURNITURE  
SILLS – DECORATIVE ELEMENTS



Are you a fan of contemporary interiors with refined and straight lines? Or do you prefer something cosier? Or perhaps a classic style is more suited to your taste? Whatever your style, Blue Limestone of Hainaut offers a **timeless look that's never out of fashion**. And it's perfect for all styles of **interior** decoration and furnishing.

A stone floor darkens over time, producing a delightful patina that simply reinforces the stone's character and makes it even more beautiful. Use it for walls, window sills, furniture or other decorative items... play around with the wide range of finishes and **sizes** to create an interior with your own **personal** touch.

Authentic Blue Limestone of Hainaut is also the perfect surround for the fire. Heat-resistant, it adds a stylish and **elegant** touch of class to your chimney. From smooth to textured finishes, or ClivEno® rough-hewn strips, we have just the style to suit your requirements.



13



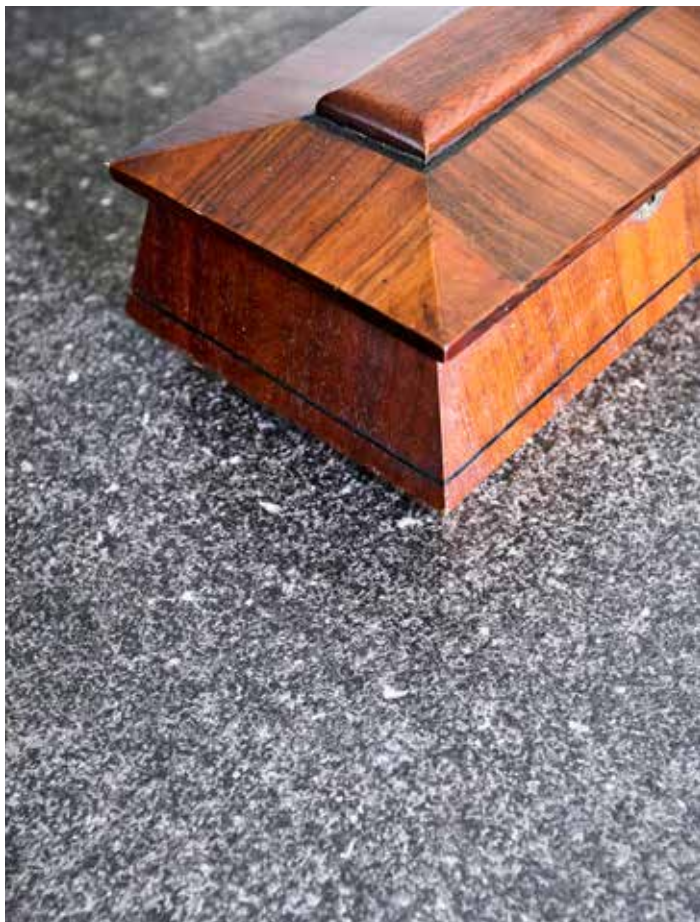
*With its unique and varied surfaces, blue stone is the perfect material to turn the subtle play of light, chiaroscuro and shadows into a permanent and never-ending spectacle.*



*Blue limestone is the perfect surround for your fire.  
Heat-resistant and beautifully tooled, a ClivEno® or Chiselled finish will add unique character to your fireplace.*



*Blue Limestone of Hainaut blends elegantly with decorative materials such as rough timber, glass or steel.  
Whether you use the Sawn, Dimpled, Dark or Light Blue Honed finishes ... any one will lend your interior the authentic, contemporary or warm style you're looking for.*







## FLOOR

*Fitting blue stone in an Opus Roman pattern will enhance your living spaces, lending a dynamic feel. Play around with optical effects and natural shades which are best adapted to each of your rooms.*



## WALL

*When placed on the wall, blue stone gives a unique character to your space. The inimitable EnoDesign® really comes into its own in this role...*



## FURNITURE

*Blue Limestone of Hainaut is easily adaptable for a multiplicity of purposes. Use it as a decorative element, for example to enhance your furniture. Blue stone finds its way with subtleness all around your home.*

# KITCHENS

Your kitchen is inspiring and warm, an environment where you like to **take your time** and discover authentic flavours of life... a place that is very much like you. Both simmering with **ideas** and utterly relaxing, it also embodies elegant, charming and authentic living. Just like Blue Limestone of Hainaut, and just like you.

With blue stone, your kitchen **takes shape**. Over here we have the big worktop in Flamed Blue stone, robust and non-porous, resistant to high temperatures. You can cook on it in **confidence** and in perfectly hygienic conditions. Next to it is the sink, beautiful in a Dark Blue Honed finish. If you're looking for a more contemporary kitchen, add an ultra-modern touch to the design with a highly Polished worktop and sideboard. And for your floor, add a unique touch of character with EnoPasso® or EnoStyl® Dark stone slabs.

Blue Limestone of Hainaut is the perfect answer to your kitchen decor **desires**. With a multiplicity of shades from clear grey blue to deep black, this stone adapts seamlessly to all your design and lifestyle requirements.



WORKTOPS – SIDEBOARDS – SINKS – FLOORS – SKIRTINGS





*For worktops, sinks and other flat surfaces, use a smooth blue limestone or one with only slight bumps, such as EnoTouch® or Flamed Blue.*



*Blue Limestone of Hainaut is a non-porous stone and is therefore very forgiving when it comes to small accidents and spillages that are part of daily life. A living material, it develops a patina over the years and offers all the qualities required for a floor exposed to a diversity of stains.*









25

*Add an ultra-modern, design touch to your contemporary kitchen with a floor in EnoPasso® complemented by a Dark Blue Honed finished worktop.*





*Re-discover the charms of old kitchens with EnoStyl® tiles or Hainaut Antic® pavings.  
Two products with an old-fashioned patina that reminds us of old castles and abbeys.*



*Your worktop stretches away into the distance, dropping into a blue stone sink that will invoke love at first sight... practical too, as any lime marks are just lost in the natural shades of the stone. And your cut-edged worktop that rounds everything off perfectly.*



### WORKTOPS

*The natural elegance and timeless authenticity of this worktop in Dark Blue Honed stone will delight lovers of refined kitchens.*



### FLOORS

*An EnoStyl® floor, with its different shades and specific appearance is perfectly adapted to the requirements of kitchen living without hassle.*



### SIDEBOARDS

*Extend your worktop with a sideboard in the same shade or alternatively make a contrast and play with shades, sizes and finishes from our extensive range.*

# — WATER FEATURES —

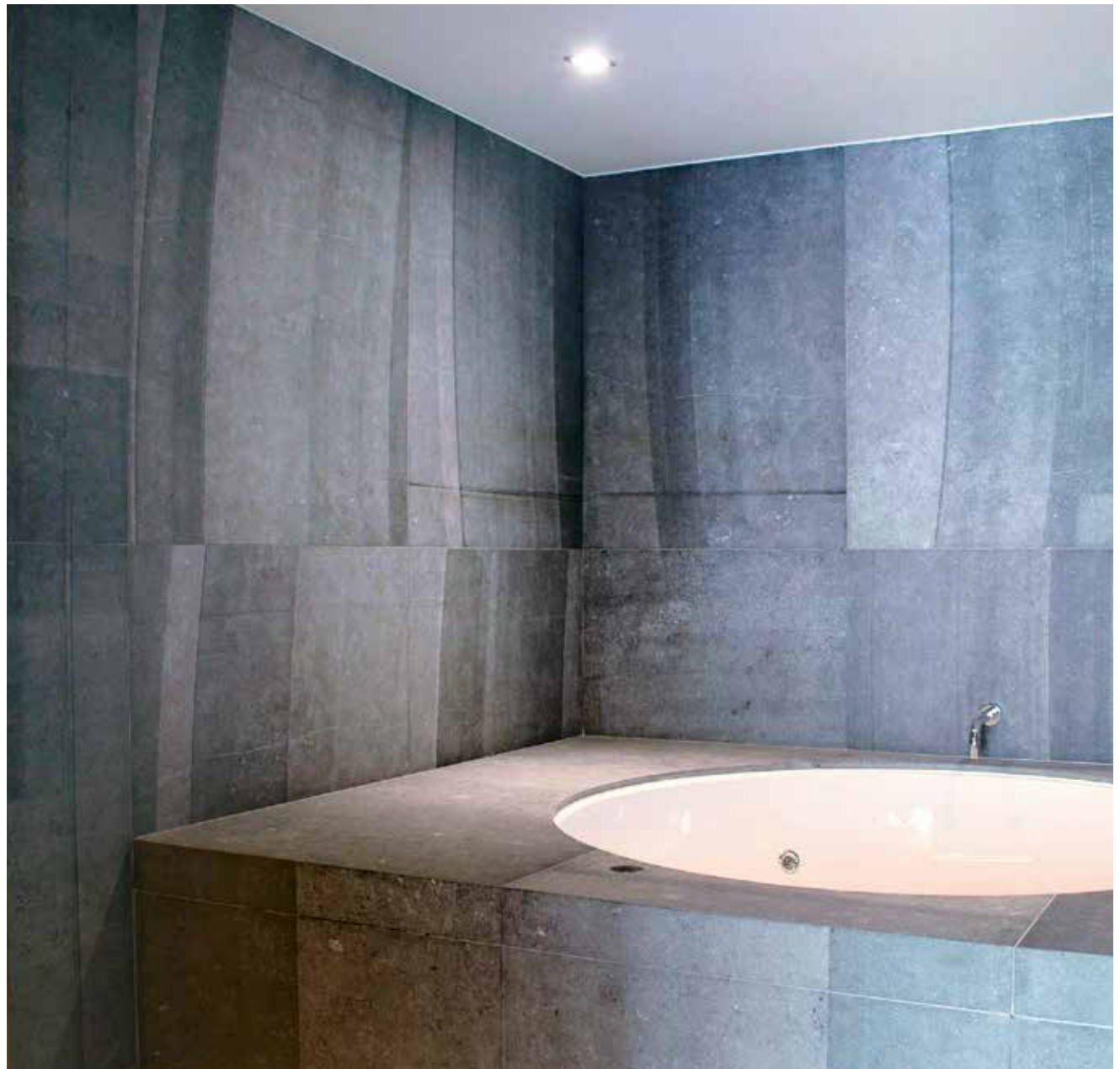
BATHROOM COUNTERS – SINK – SHOWER – BATH  
SWIMMING POOL – FLOOR – WALL



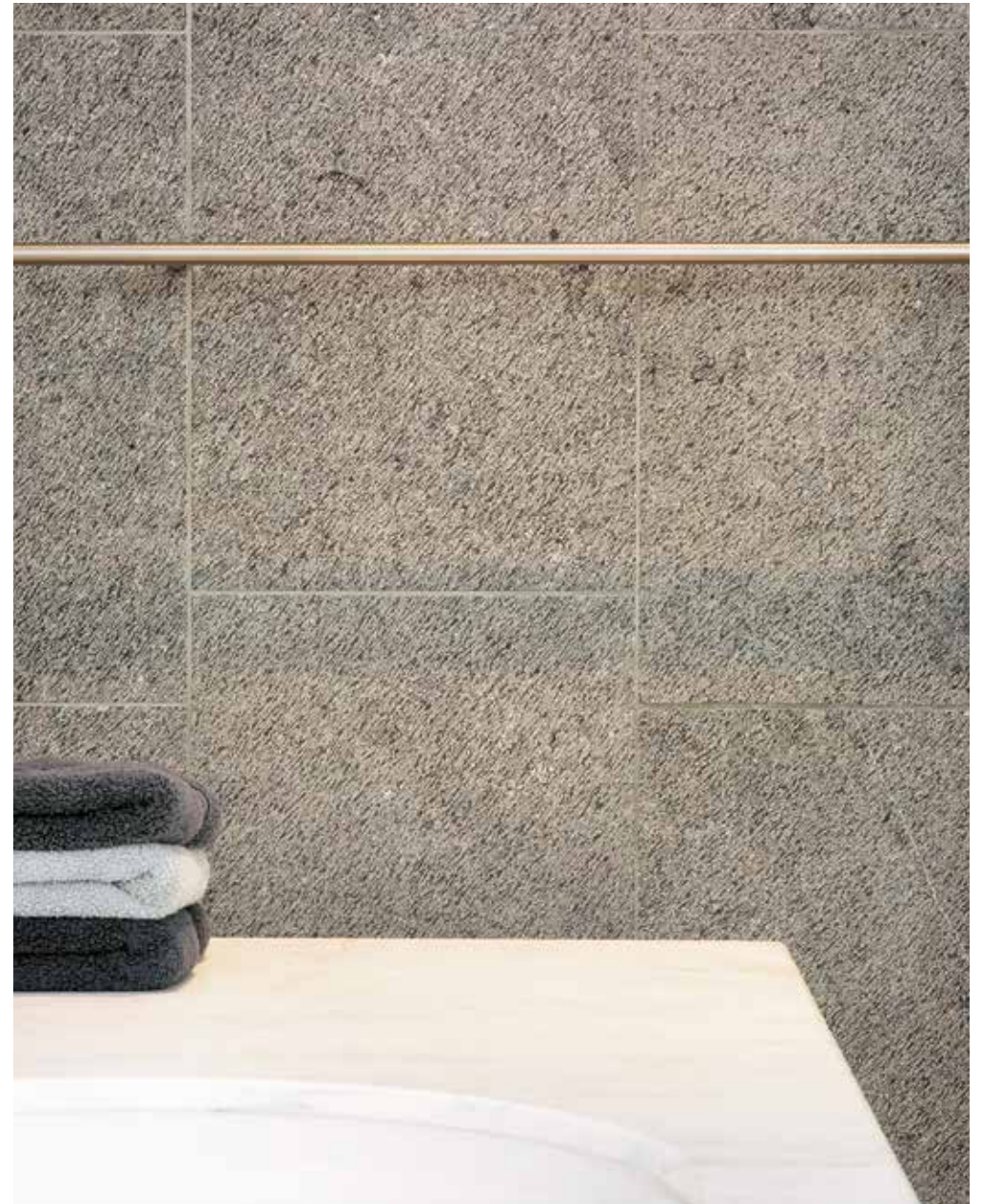
By fitting out your bathroom, shower, indoors swimming pool or counter with Blue Limestone of Hainaut, you really are paying tribute to its origins ... and there's nothing more relaxing than recharging your batteries surrounded by with this **noble and pure** material, that was born in a warm tropical sea.

Here, blue stone really unveils its warm **character**. Steam baths, saunas, spas and other health centres have adopted it because of its beauty and its capacity to adapt to the prevailing temperature thus keeping the heat in.

The non-porosity of Blue Limestone of Hainaut means it is naturally shielded against water, which just pearls on its surface. The resulting satin-like **touch** of the slabs under your feet is a feeling that is truly a pleasure without equal...









*For your floors, choose for a stone with a slightly uneven relief finish, such as the Flamed Blue or EnoSkin®, which offers the advantages of being both anti-slip and comfortable to walk on.*



35

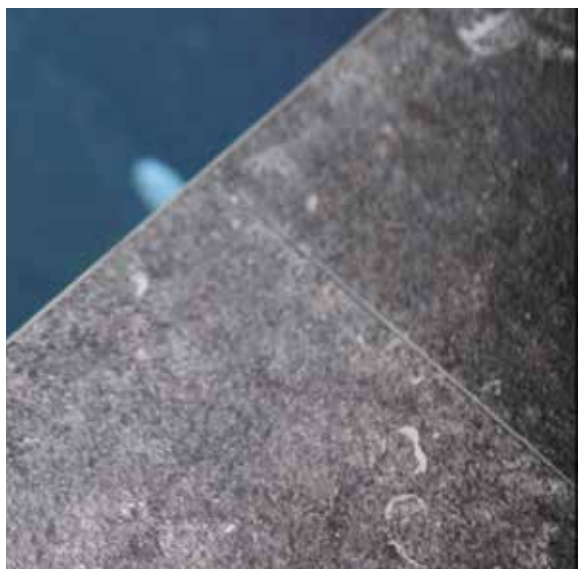
*Wood and stone in refined harmony, Blue Limestone of Hainaut reveals all its beauty in this contrasting environment.*



*Blue Limestone of Hainaut is an invitation to relax. Re-charge your batteries by being in contact with a stone finding its origins from the depths of the ocean.*







### FLOOR

*Water simply pearls on the non-porous surface. Lime marks disappear in the natural shades of the stone without penetrating it. The stone is therefore easy to clean and seduces by its natural character.*



### WALL

*A blue stone wall sets your shower apart. And textured finishes such as Flamed Blue, Chiselled or Charred will give your wall an original and creative touch all of its own, whether fitted in showers or elsewhere.*



### BATHROOM COUNTER

*High standing hotels and restaurants treasure Blue Limestone of Hainaut for its authentic, nobility and timeless character.*

## ABOUT THE MATERIAL

### CLASSIC FINISHES

Whether it's for use underfoot, on the wall or as furniture, Blue Limestone of Hainaut considerably enhances the beauty of your interior. Its timeless aspect allows it to adapt to all type of life's decors.

Slightly textured finishes are recommended for the floors of your water features. Anti-slip, they provide added security when getting in or out of the shower or the bath and remain comfortable for barefoot walking. Polished finishes, on the other hand, are exclusively used on walls and window sills.

We recommend using either Flamed Blue, Clear or Dark Blue Honed or EnoTouch® for your vanity unit or worktop. It is easy to clean, which means less work to do.

SAWN



Min. thickness: 1,5 cm  
Max. thickness: no limit



SCOURED



Min. thickness: 1,5 cm  
Max. thickness: 8 cm



LIGHT BLUE  
HONED



Min. thickness: 1,5 cm  
Max. thickness: 8 cm



DARK BLUE  
HONED



Min. thickness: 1,5 cm  
Max. thickness: 8 cm



**For your walls**, you can choose any one of these finishes. The very best option is the Dueno range with a thickness of 15 mm. **For your floors**, avoid the Polished finish and, for your bathrooms or swimming pool, use lightly textured finishes which offer the added advantage of being anti-slip.

HIGH POLISHED



Min. thickness: 1,5 cm  
Max. thickness: 8 cm



ENOSKIN®



Min. thickness: 1,5 cm  
Max. thickness: 8 cm



ENODESIGN®



Min. thickness: 2 cm  
Max. thickness: 15 cm



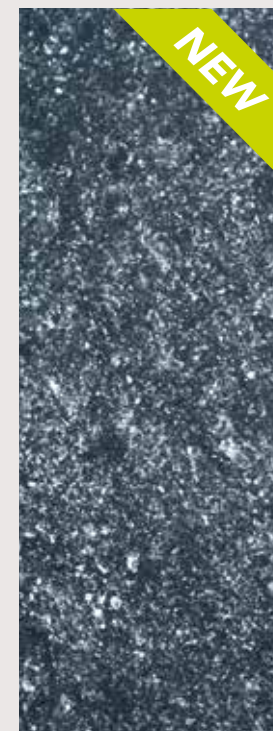
FLAMED BLUE



Min. thickness: 1,5 cm  
Max. thickness: 15 cm



ENOTOUCH®



Min. thickness: 1,5 cm  
Max. thickness: 8 cm



For furniture, window sills and shelves, you may choose from the entire range of finishes – just opt for whichever one suits you!

# ABOUT THE MATERIAL

## EXCEPTIONAL FINISHES

If you enjoy being surrounded by original creations, you'll find your heart's desire among this range of exceptional blue stone finishes.

Nothing is impossible with these top-end finishes which have been chiselled, sculpted, dimpled or bush-hammered to obtain extraordinary results. Particularly appropriate for furniture, design and decoration purposes. When planning their use, pay specific attention to the fitting process (weight and thickness must both be taken into account).

FINE GRAINED  
DIMPLED



Min. thickness: 3 cm  
Max. thickness: 15 cm



FINE GRAINED  
BUSH-HAMMERED



Min. thickness: 3 cm  
Max. thickness: 30 cm



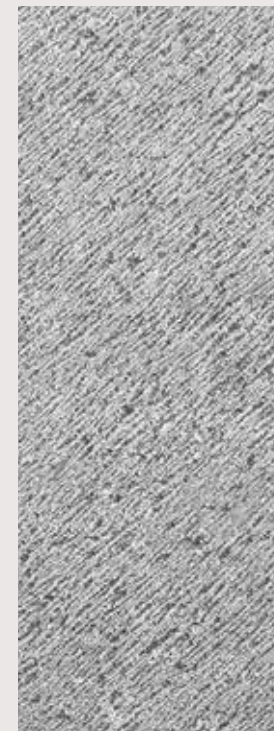
FINE GRAINED  
PICK-DRESSED



Min. thickness: 3 cm  
Max. thickness: 30 cm



OLD CUT

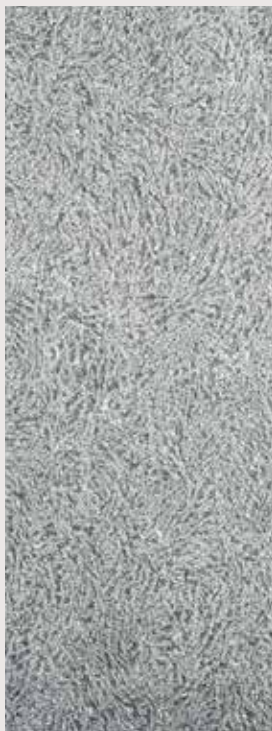


Min. thickness: 3 cm  
Max. thickness: 30 cm



**For your walls**, the whole range of exceptional finishes will allow you create your own unique environment. The thickness for use on walls ranges from 1.5 cm to 5 cm maximum.

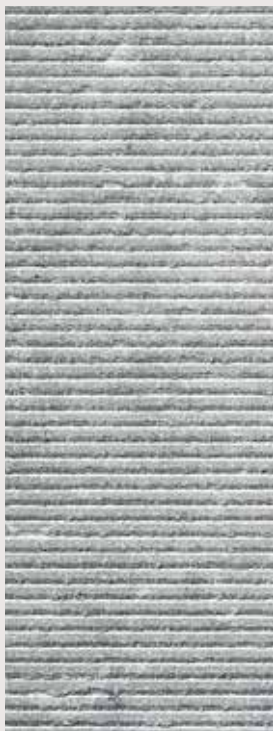
FROSTED



Min. thickness: 3 cm  
Max. thickness: 30 cm



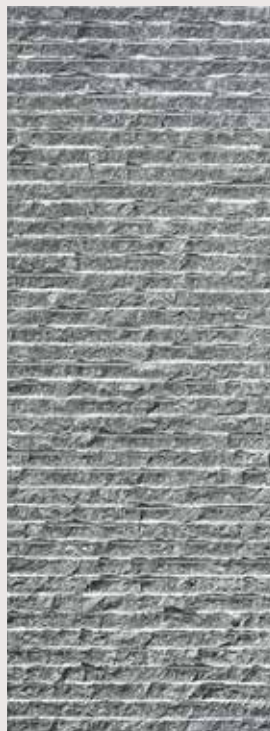
CHISELLED



Min. thickness: 3 cm  
Max. thickness: 35 cm



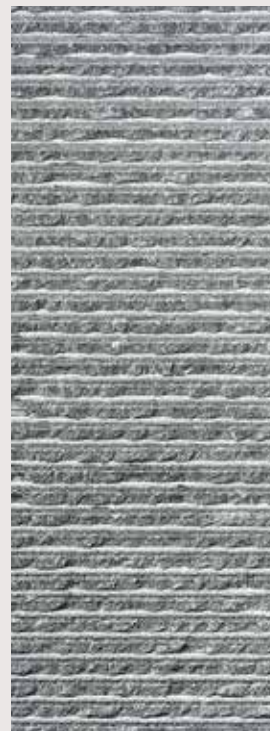
SCLYPED



Min. thickness: 3 cm  
Max. thickness: 35 cm



CHARRED



Min. thickness: 3 cm  
Max. thickness: 35 cm



These finishes are also suitable for **floors** for places run through wearing shoes or slippers in order to guarantee maximum comfort.

# ABOUT THE MATERIAL

## EXCLUSIVE SLABS AND PAVINGS

The uses of blue limestone are unlimited – it can be laid literally anywhere in your house. From your entrance hall to your chimney, via your staircase, kitchen and dining room, Blue Limestone of Hainaut opens up a world of possibilities.

### OLD-STYLE STONES

As if aged by the years, their irregular surface shows the particularities of the authentic rock, and offers a wide, varied and balanced range of shades.

### SPLIT STONES

The granite sparkle that this stone features really shows its natural aspect, force and character.

#### ENOSTYL® CLEAR



Min. thickness: 2 cm  
Max. thickness: 5 cm

#### ENOSTYL® DARK



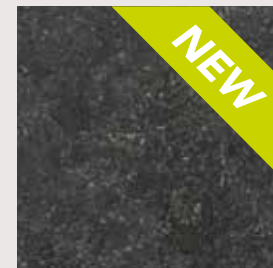
Min. thickness: 2 cm  
Max. thickness: 3 cm

#### ENOSTYL® DARK BRUSHED



Min. thickness: 2 cm  
Max. thickness: 3 cm

#### ENOPASSO®



Min. thickness: 1,5 cm  
Max. thickness: 3 cm



EnoStyl® Clear slabs will give a rustic and warm feel to your interior and exterior alike. EnoStyl® Dark, featuring the patina style of slabs in old churches, will bring a convivial touch to your interior. EnoStyl® Dark Brushed has a much darker, but softer surface than EnoStyl® Dark. In order to reinforce the old appearance of EnoStyl® slabs, the edges are bevelled. Dark slabs should only be used indoors, whereas the EnoStyl® Clear slabs could be extended to your patio.



EnoPasso® features an old style, as if weathered by the years. This soft to touch, dark grey to black satin with sawn edges slabs really comes to its own in the modern architecture.

## HAINAUT ANTIC®



Min. thickness: 3 cm  
Max. thickness: 5 cm



The beaten down appearance of Hainaut Antic® reminds us of the atmosphere in the old castles and farms. This paving goes well with a cottage style, and lends a spa feel to your bathroom.

## CLIVENO®



Thickness: 2,5 cm to 3 cm



These blue stone strips are easy to fit thanks to their thickness of just 2.5 to 3 cm. The split surface of the ClivEno® shows all the sparkle of the original rock. A combination of different sizes makes it possible to cover the most diverse walls with a coat showing strength and character.

## BRICKENO®



Regular thickness: 5 and 8 cm



The BrickEno® rubble stone is more robust still, really bringing the rock in the house. Sublime for covering a wall, where it's enhanced by its bright granite sparkle, it's also very popular for floors thanks to its anti-slip properties.

—  
PRACTICALLY  
SPEAKING  
—

## WHY CHOOSING FOR BLUE LIMESTONE OF HAINAUT?

*Every living being owes its beauty to its unique character and Blue Limestone of Hainaut is no exception. Originally made of once-living material, the crinoids - traces of the fossilised aquatic fauna and flora – that are still visible in the blue stone are the guarantee of its authenticity. The unique properties of Belgian blue limestone make it more resistant than other stones with similar appearance quarried abroad. And unlike imitation blue stones, the blue stone from Belgium takes on a beautiful patina as it grows old.*

*Only the original Belgian blue stone offers this high resistance to wear and tear and compression. Belgian blue limestone is not affected by water, nor by sharp temperature differences or harsh weather conditions. The qualities present in the natural stone make it unalterable. Blue Limestone of Hainaut is 100% 'Made in Belgium' and has an ecologic fibre. You would be hard pressed to find a better material.*



*Not many materials can be as easily adapted to architectural projects. Blue Limestone of Hainaut is the ideal stone for both building and decorating. It covers facades, brings structure to patios and is used in both public and private buildings, old and new. It can be used on floors, on walls, for decorations and for furniture, all over the house.*

*The extensive range of shades and textures allow you to integrate it in every type of indoor space. Its non-porous structure responds to the most excessive demands in terms of maintenance and hygiene. Its*

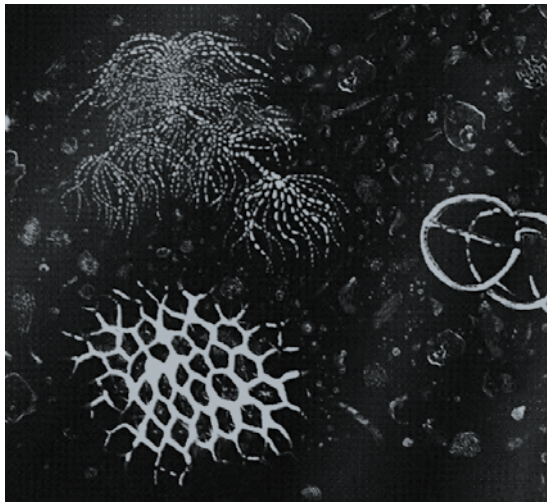
*excellent thermal conduction makes it perfect for underfloor heating, highly appreciated in bathrooms and living rooms.*

*Durable and naturally beautiful, blue stone is a HEQ (High Environmental Quality) material that ensures thermal, acoustic and hygiene comforts, while its anti-slip properties offer a high level of safety.*

## HOW CAN YOU BE SURE YOU'RE CHOOSING THE AUTHENTIC BLUE LIMESTONE OF HAINAUT?

*As world markets have become more accessible, Belgian Blue Stone - or 'petit granit' - has seen increasing competition with arrival of numerous similar stones from Asia and elsewhere. Many of them falsely benefit from the excellent reputation of the authentic Blue Limestone of Hainaut.*

*How can you see the difference between the real Blue Limestone of Hainaut and its imitation stones or similar stones of a lesser quality? These foreign stones simply do not have the same qualities. Some oxidise over time because they are not adapted to our harsh weather. Or they do not resist against our regular periods of repeated frost and thaw and the bad weather, leaving ugly rings around their ooliths. The golden rule for lovers of authentic, superior quality natural stone - always distrust cheap prices.*



### AUTHENTIC FOSSILS

The visible presence of fossilised crinoids gives Blue Limestone of Hainaut its incomparable character and charm and is proof of the authenticity of this local stone, which is far more resistant than any other stone of a similar appearance. Take a close look at the stone, touch and compare it. You can feel the authenticity of this living material and that makes all the difference.

Here's a trick to determine the quality - just immerse the stone in water, and if it develops rings and brownish areas with different colours, you can be sure you are dealing with dolomite, which mainly comes from Asia.



### PROOF OF PROVENANCE

Here at Carrières du Hainaut® we guarantee the provenance and absolute quality of each of our stones. With every purchase of either finished or half-finished products we provide a document certifying the origin of the stone with a unique code and stamp. Our very strict quality standards exceed even the strictest European requirements. The complete exploitation process of Carrières du Hainaut is homologated by a technical certificate from the *Union Belge pour l'Agrément technique dans la construction* (UBATc – Belgian Union for Technical Approval). The performance declarations (CE) for our finished products are available upon request.



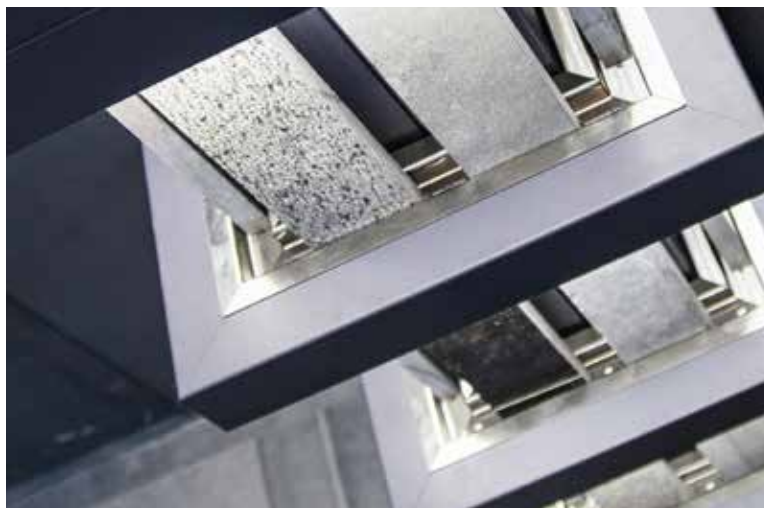
### EXCELLENT DISTRIBUTOR NETWORK

The Carrières du Hainaut® relies strongly on a network of professionals, which include a large number of stone and marble masons whose professionalism and know-how second to none. Ask for their advice, and allow yourself to be guided by the professionals identified and recommended by the 'Carrières du Hainaut®'.

## PRACTICALLY SPEAKING

### HOW TO CHOOSE FROM SUCH A WIDE RANGE OF SHADES AND FINISHES

*Each finish gives the stone a particular shade, while a combination of finishes then creates new harmonies. If the choice in terms of finishes is more aesthetic, then certain technical restraints will impose certain limits. For example, to make the correct choice you need to take into account the application intended, and the ideal recommended thickness.*



#### CHOOSE THE CORRECT FINISH

Either dark finishes or clear finishes can be used indoors – but remember that the stone will develop a darker patina over time. This patina effect is part of the natural life of the material, enhancing its beauty and charm as time goes by.

In order to keep it as shiny and bright, the Polished finish will be avoided for use on floors and will be reserved exclusively for interior wall applications.

The more textured finishes offer not only an aesthetic advantage, but are also a security element due to their anti-slip properties. Therefore, they're ideal for floor in wet-rooms, bathrooms, corridors and passageways. Here we recommend stones with lightly structured finishes, such as the Flamed Blue, EnoSkin® or EnoStyl®.

More roughly textured finishes such as Chiselled, Sclyped, Charred, Old cut, Dimpled and Bush-Hammered are very popular for their decorative qualities – perfect for walls. Attention should be paid to the minimum thickness to be used for these structured finishes and the correct fitting system that will have to be used.

#### CHOOSE THE CORRECT THICKNESS

The fitting system depends on what purpose the stone is used for and on the support on which it will be fitted. This may influence the choice of thickness and size of the stone. In case of floor refurbishment, check whether there is a underlying screed, what quality and how flat it is, how much space is available under the doors, and whether under-floor heating is installed.

If you are using the stone on walls, the finest faience will be the easiest ones to fit. The fitting techniques are adjusted for thicker stones. If you wish to use the blue stone for a worktop, on furniture and any other decorative elements, the required thickness is decided by mutual consent with the professional in charge of the production and fitting, in compliance with technical and aesthetic criteria.

**Facing the current trends going for stones with an ever decreasing thickness, Carrières du Hainaut® proposes the DUENO range,** a special range of thin slabs (15mm) aimed at indoor usage on walls and floors. DUENO's success is thanks its numerous advantages.

These lighter slabs can be placed with either a tile adhesive or mortar. For floors, previous thin covers such as carpet or tiles can either be replaced, or the slabs can simply be placed on top of the existing carpet or tiles, ideal in case of refurbishment. This range comes in a wide choice of finishes and rectangular or square sizes, allowing your imagination to really run riot. Plus of course there is the added fantastic value for money you get with this range.

Depending on what you're planning to use the stone for, use the icons listed underneath each finish, from page 40 to 45 of this catalogue, to help you in your choice for the appropriate finish(es). The listed minimum and maximum thicknesses will also help you to decide which one you need. Whatever choice you make, allow yourself to be seduced by our colours and textures.

## WHERE CAN YOU FIND THE BELGIAN BLUE LIMESTONE OF HAINAUT?

Carrières du Hainaut® relies on a network of professionals, such as stonecutters and marble masons, whose passion for the natural stone is matched only by their remarkable know-how. A network of professionals who both re-sell the finished products of Carrières du Hainaut® and transform our material into creations that respond to the choice and taste of their customers. Just ask for their advice to bring your project to life.



You can find the distributor nearest to you on our website [www.carrieresduhainaut.com](http://www.carrieresduhainaut.com).

## HOW CAN KEEP YOUR BLUE STONE CLEAN?

Blue stone has been around for many years and in many styles. It is a living material which develops a delightful patina over time. Its appearance tells the history of many generations which have grown old together with it. Let Blue Limestone of Hainaut take the toll of life - it will add charm and character over time. Blue Limestone of Hainaut is hard and non-porous - qualities that will protect it from the vagaries of daily life and time.

### A QUICK GUIDE TO KEEPING YOUR BLUE STONE ENDLESSLY BRIGHT:

#### TO DO

Immediately after the stone has been laid, you need to let it dry for two to three months to give the humidity in the stone's bed (adhesive, mortar) time to evaporate.

#### NOT TO DO

For three months after the stone has been laid, avoid at all cost cleaning the stone with too much water and an excess of soap.

#### TO DO

Before treating the stone for more protection, clean it in-depth with either baking soda or a cleaning product for natural stone from the Lithofin range.

#### TO DO

If you want to give a protection coat to your blue stone, treat it with a water-repellent and/or oil-repellent product. Choose water based products to keep the shades clear. Oil-repellent products will reinforce colour and patina.

#### TO DO

Use clear water for your stone's regular clean. Should you wish to add soap, choose Marseille soap flakes type soap. In order to avoid your regular clean with soap accelerating the stone's patina and darkening it, clean the stone from time to time with clear water or with a bit of ammonia or baking soda.

#### NOT TO DO

Do not use any acid or chemical cleaning products nor any anti-lime products for your sanitary installations. If you require a more intensive clean, only de-greasing products specific for natural stone can be used, such as products from the Lithofin range, or either K2R.

#### TO DO

Immediately wipe off any soiled surface with a cloth and a bit of water. For set stains, add a bit detergent.

#### TO DO

If you use products for natural stone, follow the manufacturer's instructions. It is important to use the correct dosage. If in doubt, carry out a test on a small part of the stone that is out of everyday sight.

CARRIERES  
DU  
HAINAUT

## THE CARRIERES DU HAINAUT®, A SOLID PARTNERSHIP

*Carrières du Hainaut® has been extracting and manufacturing this iconic, unique and authentic blue stone for some 125 years. In time, and by developing the expertise and know-how of our teams and by constantly improving their craftsmanship, our company has become the biggest quarry of ornamental limestone in Europe.*



### A SOCIALLY AND ENVIRONMENTALLY RESPONSIBLE COMPANY

Carrières du Hainaut® subscribes fully to the process of durable and responsible upgrading of local resources. The extraction and transformation processes at the Carrières du Hainaut®, carried out at a single site in Soignies, Belgium, are completely unique in the large-volume sector (200,000 cubic metre/year) and are aimed at reducing as much as possible our production's ecological footprint.

Carrières du Hainaut® is committed to offering a natural stone as well as an outstanding quality of service in terms of the environment. The work methods used guarantee responsible handling where safety is of principal importance. The by-products such clay and upper strata are upgraded thanks to our external partners. The source water released during the extraction process supplies nearly 90,000 local inhabitants. More than a thousand solar panels have been installed on the roof of our workshops, generating 225,000kWh/year in electricity used in our production.



### A DURABLE AND RESPONSIBLE CHOICE

Blue Limestone of Hainaut is in many ways an ecologically responsible choice.

When you choose the local blue stone, you choose an exceptional material, and one that is locally derived. While benefiting from this gift of nature in your vicinity, you can at the same time avoid extensive transport which comes at a high price both in terms of energy, ecology and finance.

Choosing our blue stone also encourages the development of know-how, which guarantees an unequalled quality while at the same time helping ensure local long-term employment.

It is also about respecting the environment. Our blue limestone is a durable product like no other: solid, non-porous, and with an extremely long lifespan, its use can be seen today in numerous iconic old structures, where it also offers extensive possibilities for recycling and re-use.



### A PRODUCT AND SERVICE OF OUTSTANDING QUALITY

Blue Limestone of Hainaut is a noble and natural material whose origins stretch back 345 million years. It is the visible presence of crinoids in the stone that give it its authentic character. Each stone is shaped uniquely and has successfully passed the very selective sorting procedures before it merits the 'Carrières du Hainaut®' quality label.

The extraction and production capacity of Carrières du Hainaut® is such that even the most urgent and demanding requests in terms of quality and relatively short deadlines can always be met. Not only does the Carrières du Hainaut® cooperate with a network of distributors that boast an extremely high level of know-how, they also offer architects, designers and consulting firms the services of their own consulting architects in order to creatively work together on your projects. And the Commercial teams are fully trained to develop with clients the most appropriate solutions in terms of technical, aesthetic and financial requirements.



## CARRIÈRES DU HAINAUT® SOME KEY FIGURES

- > **Employment:** 400 directly; +/- 2,500 indirectly
- > **Actual site:** 235 ha
- > **Yearly extracted volume:** +/- 200 000 m<sup>3</sup>
- > **Yearly sales:** +/- 40 000 m<sup>3</sup>
- > **Markets:** 75 % in Belgium, 25 % is for export  
(France, the Netherlands, Germany and worldwide)

## VISIT US

Would you like to know more about Blue Limestone of Hainaut, its origins and how it is quarried? Just contact the Office du Tourisme at Soignies to organise a visit. You can get in touch with them on either tel.: **+32 (0) 67 34 73 76** or via e-mail on **[tourisme@soignies.be](mailto:tourisme@soignies.be)**

If you wish to organise a visit within the framework of a specific project, you may contact Carrières du Hainaut® directly by sending an e-mail to: **[info@carrieresduhainaut.com](mailto:info@carrieresduhainaut.com)**



CARRIÈRES DU HAINAUT

Rue de Cognebeau, 245 | B-7060 Soignies | Belgium  
Tel.: + 32 (0)67 34 78 00 | Fax : + 32 (0)67 33 00 59  
[www.carrieresduhainaut.com](http://www.carrieresduhainaut.com) | [info@carrieresduhainaut.com](mailto:info@carrieresduhainaut.com)