



— EXTERIOR —



CARRIÈRES DU HAINAUT



INTRO- DUCTION

THE BELGIAN BLUE LIMESTONE OF HAINAUT, NATURAL ELEGANCE THAT STANDS THE TEST OF TIME

Belgian Blue Limestone of Hainaut will add beauty to your garden and exterior, whether it's used as part of a grand design, or to add a classic touch, or even as a naturally occulating feature. It's part of your personality.

Wall surfaces, patios, parking areas, pool edging, pathways and low walls - everywhere it's used this timeless stone seduces with its elegance. Its refined appearance and authenticity are evidence of a nobility that stems from 345 million years of history.

With its changing reflections, its irregularities and softened edges, Blue Stone from Hainaut is the reflection of a cultivated taste for beauty. Architecturally and decoratively outstanding, Blue Limestone of Hainaut is soft to the touch, and its very versatility gives free rein to your imagination.

Creating a natural harmony with wood, brick, pebbledash as well as other classic or contemporary materials, blue stone's stylish, characterful aspect is perfectly complemented by its practical qualities - easy to

clean, solid and durable. A stone of exceptional longevity, blue stone's very timelessness makes it even more beautiful with every season lived, adding a unique patina that's testament to the passing of the years.

Only the most beautiful of stones deserve your attention. At Carrières du Hainaut® our selection procedures are strict, rigorous and uncompromising. Our remarkable quality label is your best guarantee.

For centuries, blue stone has been used for facades, paving and various decorative uses. Now, let us help you discover a wealth of other outdoor applications, presented in this catalogue. Let yourself be inspired by the projects you find within, and allow your imagination take wing to give your residence, garden and surroundings their very own unique character.

Would you like to know more? The 'Practically Speaking' section on page 46 should provide the answers to your first questions. You can find out more about this unique stone and its quarrie on our website carrieresduhainaut.com or at one of our partners' points of sale.

CONSTRUCTION	TERRACES	GARDEN & OUT- DOOR SPACES	SWIMMING POOLS & WATER FEATURES	THE PRODUCTS	PRACTICALLY SPEAKING	THE QUARRY
4	12	22	32	40	46	50

CONSTRUCTION

WALLS – WALL BASES – THRESHOLDS – WINDOWSILLS
DOOR AND WINDOW FRAMES – GARAGES



Blue stone has always been treasured for its elegance, robustness and solidity. Designers of public buildings have used it to add prestige and ensure resistance, and builders of private houses have followed suit, seduced by its aesthetic and durable properties. Blue Limestone is highly weather resistant, even in harsh conditions. It remains unaltered by sharp temperature differences and frost and is unaffected by splashes and blows - marks just disappear in no time at all. The non-porous quality of the stone prevents damp from rising and, if it's the authentic Blue Limestone of Hainaut, it won't splinter, crumble or crack.

Aesthetically pleasing and with a noble aspect, blue stone's very timelessness is your guarantee of protection, making it a stylish and natural shield that will ensure your home is protected from the elements.

And that timeless quality also means that blue stone blends harmoniously with modern day architectural materials and techniques such as sophisticated exterior insulation and contemporary threshold and window frame designs.





*Dare to use Blue Limestone of Hainaut differently! How about a garage door that blends seamlessly into your facade?
The rough irregularity of Crust or ClivEno® provides endless possibilities, ensuring you get the best of the stone in its most natural state. Sublime!*



Daring and brilliant! Sunshades in Blue Limestone of Hainaut protect from the sun's rays while passers-by look on dazzled. Blue stone goes beyond traditional architecture, always pushing back the boundaries of the possible.



*Blue stone can be laid traditionally, standard glued, anchored or glued with a honeycomb structure...
a range of different techniques that offer an entire creative palette to give life to your ideas.*



Use a range of different stone widths as a reminder of stone's natural stratification. Alternate between split and sawn off faces of BrickEno® rubble stone to express your originality and style. Very interesting architecturally!





FACADES

Blue stone stands apart from other facades, reinventing itself for every new creation. It attracts attention, insulates against noise and, just like a rampart, acts as the perfect protective shield. Make your own impression with Old Cut, Crust or EnoDesign®.



WALL BASES

Well established, the Scoured and Light Blue Honed finishes are unfailing classics. Structured finishes such as Charred, Chiselled or EnoSkin® offer a more contemporary character.



THRESHOLDS, SILLS AND FRAMES

Thresholds, sills and door and window frames in blue stone will guarantee distinction and timeless class for your home. Designed with refined lines, classic or contemporary, it will always add elegance. Aesthetically pleasing, blue limestone also adds real value to your asset. And when it comes to durability, you can count on the hard stuff!

TERRACES AND PATIOS

PAVING – FURNITURE – STEPS – CURBS – SHAPED ELEMENTS

Blue stone underfoot is a feast for the eyes. A source of happiness every day. A pleasure in the long term. Kids can play on it and really have the time of their lives. Rain may pour and sun may shine, your friends can spill their drinks, the barbeque can spit... blue limestone can take it all! After all, it's been around a long time, and seen everything.

The wide range of sizes and finishes available means you can have the patio of your dreams. Be inspired by our ideas and play around with sizes. The Roman Opus and Opus Incertum layout styles will give your patio a certain something special. And why not extend your indoors to the outside by using the same floor tiles?

Give your ideas and desires depth by using blue stone for the barbeque and table as well. Blue stone is also perfect for use as furniture or for flower bed borders. Ask your stonemason to create you something truly unique - a table, foot-rest or a bench which will add an original decorative aspect to your outdoor environment.

Perfect for outside use in all weathers, Blue Limestone of Hainaut is non-porous and frost resistant. It is equally unaffected by bad weather or the small accidents which happen all the time in everyday life outside. Only Blue Limestone of Hainaut can offer such robustness.







These strongly textured finishes guarantee a highly aesthetic effect. They are also 100% anti-slip, which gives them added security value.



15



Paving stones with an aged appearance, such as Hainaut Antic® or KlinkStone® lend a rustic or cottage character. Either go the full hog and accessorise in the same style or add a modern touch with contemporary furniture in wood or steel.



Let it rain ... BrickEno® rubble stone shows off the sparkle of the rock. Whether you use Flamed Blue, Split Pavings, ClivEno® or Sawn stone you'll appreciate the pretty blue shades that come out in the rain.



*Garden features in Blue Limestone of Hainaut can go the whole winter without a flinch.
Harsh weather conditions, frost and small accidents of outdoor everyday life will have no adverse effect on the natural stone.*



*Thanks to their elegant simplicity, EnoStyl® Clear, Sawn and Flamed Blue finishes are the natural choice for your terrace paving.
The lightly textured finishes are equally comfortable for barefoot walking.*





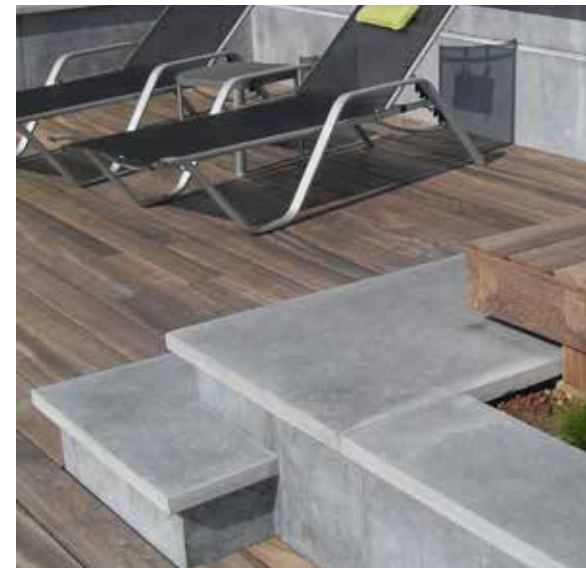
FURNITURE

Aesthetically pleasing, your outdoor furniture lends itself perfectly to blue stone. Tables, barbeques and flower pots all pay tribute to the natural universe that surrounds you.



PAVING

Soliciting admiration at your feet, blue stone paving is fun to play around with – use different sizes, finishes and layouts to create a unique effect. Go for Opus Roman for a structured mix, or throw caution to the winds with Opus Incertum for a beautiful chaos!



STEPS

Play around with the different levels for an extended perspective effect. Here, blue stone leads you on a journey of discovery from one level to another.

GARDENS & OUTDOOR SPACES

PATHWAYS – TRACKS – STEPS – WALLS – WALL COVERINGS
SCULPTURES – SHAPED AND DECORATIVE ELEMENTS



Depending on the size chosen, the stones set the tone. Pavings and small sized stones will lend a beautiful, cottage-style or classic home feeling. Large or long stones, on the other hand, will invoke a more contemporary look.

Blue stone offers no end of possibilities to create your desired garden landscape by unlocking all spaces, playing around with different levels and opening up perspectives. Pathways, tracks and stairs will lead you and your guests on journeys of discovery, while low walls will offer a natural, stylish separation between spaces.

Use blue stone as a material to either structure your garden, or alternatively, to accentuate its wild, natural state of original purity.

You can't ask for better than to have the naturally beautiful Blue Limestone of Hainaut as an integral, harmonious element in your garden.







*Unlock vegetable patches, flowerbeds and shrubberies with style thanks to the natural beauty of blue limestone.
Play around with tiles, steps, edges and paving to structure your garden exactly as you wish.*



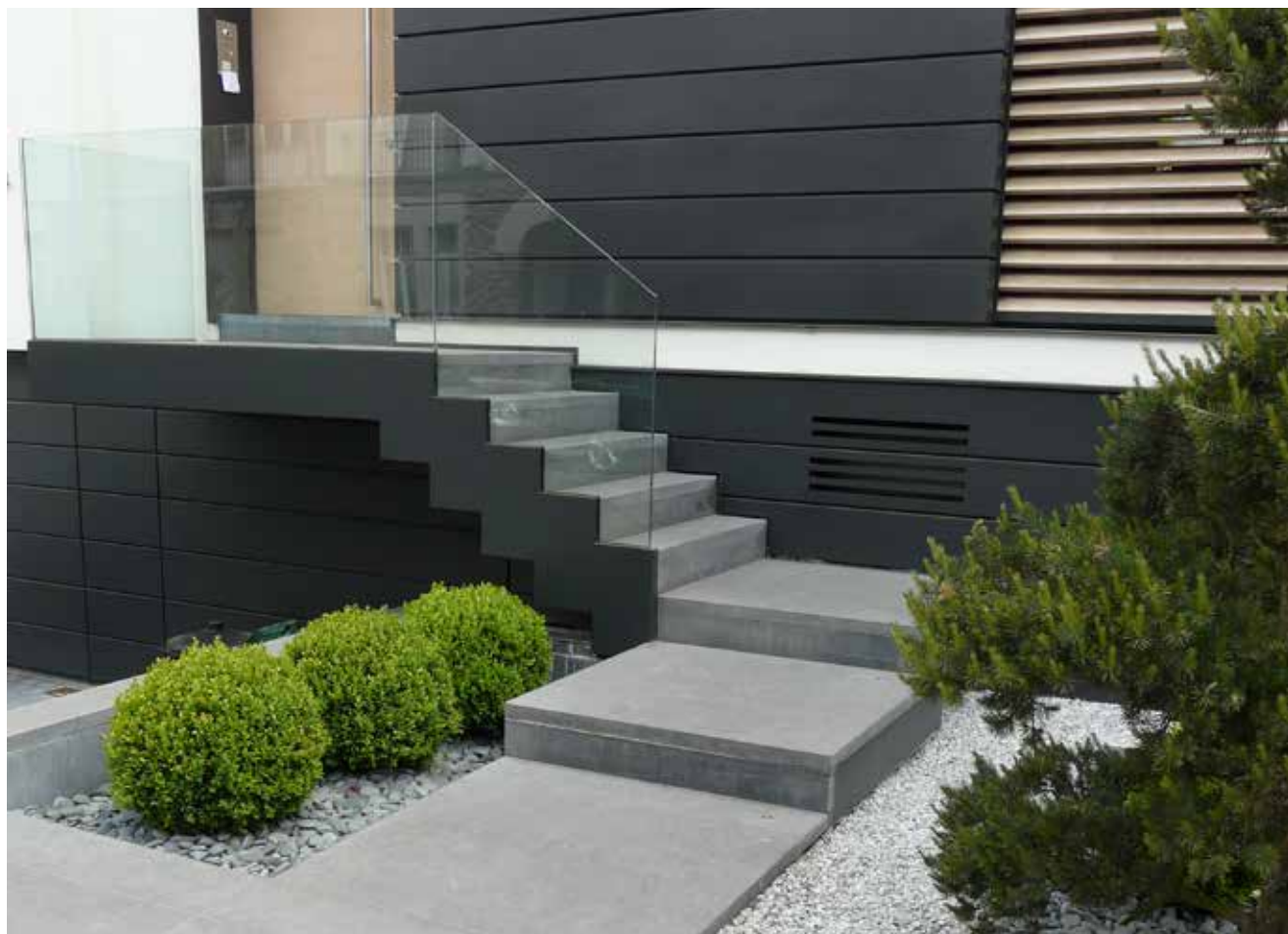


*To create unique, original and unusual outdoors structures and spaces, just let your imagination run free.
Innovate, create, dream... blue stone can take on a multitude of shapes and forms.*





Judiciously placed slabs are a natural invitation to place one's feet one after another. Interweaved wild grass is a sign of the surrounding nature, while the stone slabs, completely in their element, suggest a direction and offer a firm grip to get you safely to the end of your journey.



For your access areas, KlinkStone®, Hainaut Antic® or Split Pavings offer extra grip in rainy conditions. For those who prefer bigger sized slabs, go for stones with structured finishes such as Flamed Blue, Old Cut or Frosted which are guaranteed anti-slip. If you prefer the smooth 'Sawn' or 'Scoured' stones for steps, stair nosings in 'Chiselled' or 'Dimpled' offer added security. Blue stone can also offer extra security by using guidance slabs or tactile slabs for more difficult access areas.





PATHWAYS AND STEPS

Straight or winding, your pathways and tracks in blue stone are your opportunity to play with perspective. The textured finishes such as EnoSkin®, Flamed Blue or Frosted, or the pavings KlinkStone® or BrickEno® all offer safe passage to where you need to be. And while your feet are safely placed on your pathways and steps, your eyes can take in the surrounding natural beauty.



LOW WALLS AND WALL COVERING

Because you're a perfectionist right down to the smallest detail, blue limestone offers perfect result that's made to last. In fact, there's no better protection against water infiltrations than blue stone wall covering. A natural and permanent way to protect all type of walls.



SHAPED AND DECORATIVE ELEMENTS

The stonemason is the artist who will bring your decorative projects to life. He alone knows how to create your fountain, table, sculpture or bench – the pieces you have always dreamed of to make your garden or patio beautiful, and provide a unique and exclusive character to your outdoor spaces.

SWIMMING POOLS & WATER FEATURES

SWIMMING POOLS – POOL COPINGS – PONTOONS
PONDS – FOUNTAINS – OUTSIDE SHOWERS



Return to the very source of the natural blue stone, water features such as swimming pools, outside showers, wells or pond are an opportunity to pay tribute to the limestone's fossil origins, when Soignies and the surrounding areas were covered by a warm tropical sea some 345 million years ago. Today, there is nothing more relaxing than re-charging your batteries in contact with this natural and pure material. Walking barefoot over these flagstones with their satin touch is truly a pleasure without equal.

On top of comfort and aesthetics, there is also the added value of safety, which is essential around any water feature. The Blue Limestone of Hainaut's anti-slip finishes will help prevent slippages, falls or mis-steps.

Water just pearls on the surface of blue limestone. The non-porous stone is a natural shield against any water marks, and left-over water simply glides naturally along the stone's surface.

The Blue Limestone of Hainaut, the stone choice that comes from the very source.



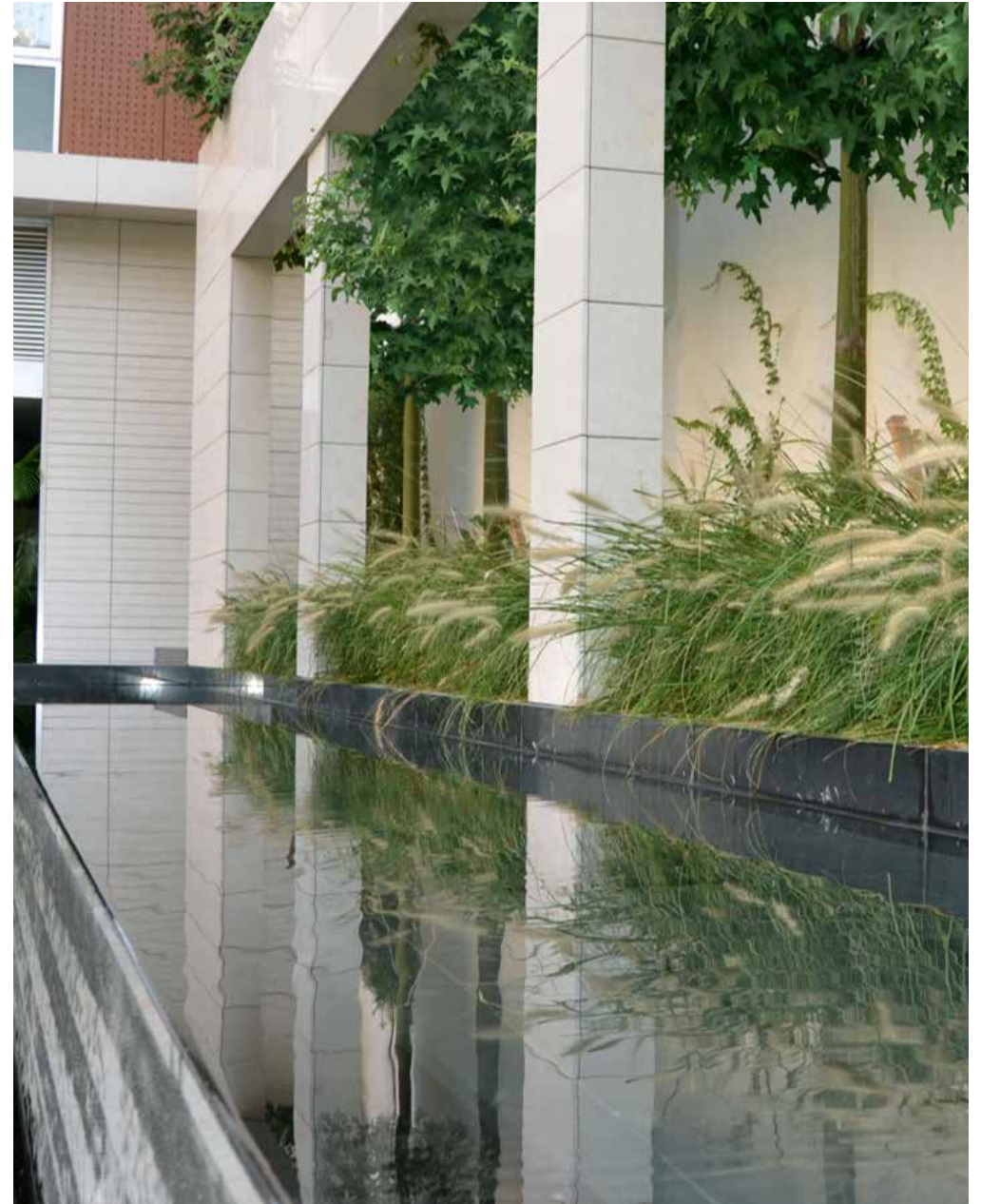


Either lying down alongside the pool or letting your feet dangle in the water while sitting on the edge, you'll appreciate the lightly textured finishes EnoSkin® or Flamed Blue, both anti slip and soft, combining safety and delicacy.





Set the tone. Create perspective. By using shaped, functional and decorative Blue Limestone of Hainaut you can give your garden its very own character.





Lights integrated in your water feature will provide a pretty play of reflections and light on the water and stone, intriguing and wonderful to behold.



SWIMMING POOL

Around the pool, the fine textured anti-slip finishes of blue limestone combine safety and softness. The new finish that carries his unanimous choice for exterior use is EnoSkin® - while soft to the touch its slight graininess provided the anti-slip. Wholeheartedly recommended by your pool builder.



FOUNTAIN

If your garden is the place that is closest to your heart, then re-charging your batteries in it helps put you in sync with nature. Make it even more alluring by adding a fountain in blue stone, an excellent way to enhance the existing beauty of your garden. A feature that combines visual beauty with the soft murmur of falling water to relax you immediately.



WATER FEATURES

Water features are an invitation to contemplation, to stopping for a while and taking time out from the rush and bustle of everyday life. Create a water feature in your own image, straight or curved, with textured finishes such as 'Chiselled' or 'Charred'. Or choose Crust or BrickEno® for even more originality.

THE PRODUCTS

CLASSIC FINISHES

We recommend choosing clear finishes for your outdoor spaces as sunlight or bad weather will naturally brighten dark natural stone surfaces.

For the floor, we particularly recommend finishes which are slightly textured, especially near water features and for steps where safety is of the utmost importance. EnoSkin® or Flamed Blue are the perfect choice for this - anti-slip, but still comfortable and soft to touch.

For patios, wall cladding, lower walls, garden furniture or sculptures, you can choose from the entire range.

SAWN



Min. thickness: 1,5 cm
Max. thickness: no limit



SCOURED



Min. thickness: 1,5 cm
Max. thickness: 8 cm



LIGHT BLUE HONED



Min. thickness: 1,5 cm
Max. thickness: 8 cm



These finishes can also be used indoors in your home (discover the indoor possibilities in the dedicated brochure)

ENOSKIN®



Min. thickness: 1,5 cm
Max. thickness: 8 cm



ENODESIGN®



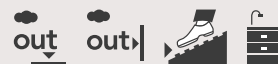
Min. thickness: 2 cm
Max. thickness: 15 cm



FLAMED BLUE



Min. thickness: 1,5 cm
Max. thickness: 15 cm



For your floors, you can choose from the entire range of finishes presented here. **For swimming pool edges**, it is best to choose lightly textured, anti-slip finishes, for extra safety. **For your walls, lower walls and facades**, choose from the entire range. **For your furniture**, again, all finishes are possible. Just allow yourself to be guided by what you like best.

THE PRODUCTS

EXCEPTIONAL FINISHES

If originality is a key value for you, you'll find your heart's desire among this range of exceptional finishing .

Nothing is impossible with these top-end finishes which have been chiselled, sculpted, dimpled or bush-hammered to obtain extraordinary results.

By using these exceptional finishes, which are particularly adapted to applications on walls, furniture and design items, you can bring style and originality to your exterior.

FINE GRAINED DIMPLED



Min. thickness: 3 cm
Max. thickness: 15 cm

FINE GRAINED BUSH-HAMMERED



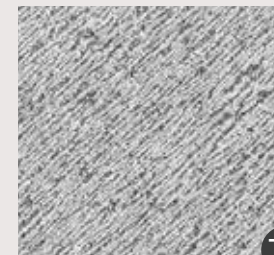
Min. thickness: 3 cm
Max. thickness: 30 cm

FINE GRAINED PICK-DRESSED



Min. thickness: 3 cm
Max. thickness: 30 cm

OLD CUT



Min. thickness: 3 cm
Max. thickness: 30 cm

COARSE GRAINED DIMPLED



Min. thickness: 5 cm
Max. thickness: 15 cm



COARSE GRAINED BUSH-HAMMERED



Min. thickness: 5 cm
Max. thickness: 30 cm



COARSE GRAINED PICK-DRESSED



Min. thickness: 5 cm
Max. thickness: 30 cm



FROSTED

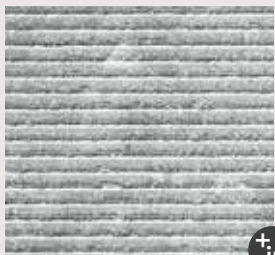


Min. thickness: 3 cm
Max. thickness: 30 cm



Looking for an unusual **wall cladding**? Choose from the whole range of our exceptional finishes.

CHISELLED



Min. thickness: 3 cm
Max. thickness: 35 cm

CHARRED



Min. thickness: 3 cm
Max. thickness: 35 cm

ENOWAVE™



Min. thickness: 2 cm
Max. thickness: 8 cm

ENOSCALA™



Min. thickness: 2 cm
Max. thickness: 8 cm

SCLYPED



Min. thickness: 3 cm
Max. thickness: 35 cm

ENOFROST™



Min. thickness: 3 cm
Max. thickness: 15 cm

ENOCRANTO™



Regular thickness:
4 and 5 cm

ENOWOOD™



Regular thickness:
4 and 5 cm



These are perfect for **floors** of passageways, where shoes are commonly worn, as they make your floors as safe as possible due to their high anti-slip qualities. Use the icons listed underneath each finish, to help you in your choice for the appropriate finish(es).

THE PRODUCTS

CLASSIC AND EXCLUSIVE SLABS AND PAVING

The applications of blue limestone are unlimited – it can be used literally anywhere all throughout your outdoor spaces. From your patio and pool edges, along pathways and tracks via the car park and the outdoor steps, Blue Limestone of Hainaut opens up all a wealth of possibilities.

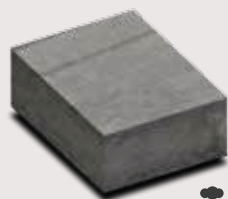
OLD STYLE STONES

Looking as if it's been aged by the years, the stone's irregular surface shows the particularities of the authentic blue stone and offers a wide, varied and balanced range of shades.

SPLIT STONES

The little granite sparkle that this stone features really shows the natural aspect, force and character of the stone.

ENOPURE®



Regular thickness:
5 cm



The blue paving stone in its purest form. With authentic simplicity, the EnoPure® paving stone shows off a fine smooth finish of clear grey colour. It adds a contemporary quality to your pathways and parking area, and even in public places.

ENOSTYL® CLEAR



Min. thickness: 1,5 cm
Max. thickness: 5 cm



The EnoStyl® Clear slabs lend a rustic, warm atmosphere to your outdoor spaces. You can easily extend the EnoStyl® Clear slabs from your reception room, kitchen or dining room to your patio, giving an impression of unlimited grandeur and space.

KLINKSTONE®



Regular thickness:
5 cm



The beaten down appearance of Hainaut Antic® and KlinkStone® is a reminder of the atmosphere in the old castles and farms. These stones go well with the cottage style of English gardens. They can also add to the authenticity of your courtyard or patio.

HAINAUT ANTIC®

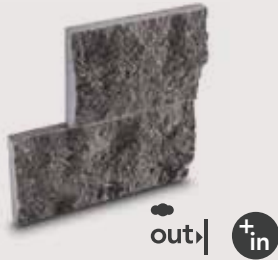


Min. thickness: 3 cm
Max. thickness: 5 cm



SPLIT STONES

CLIVENO®

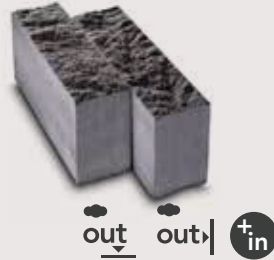


Thickness: 2,5 cm to 3 cm
in variable lengths and
widths



The blue stone strips are easy to place thanks to their thickness of just 2.5 to 3 cm. The split surface of the ClivEno® shows all the sparkle of the rock. A combination of different sizes makes it possible to deck the most diverse of walls with strength and character. Can be fitted either vertically or horizontally, depending on taste.

BRICKENO®



Regular thickness:
5 cm and 8 cm



The BrickEno® rubble stone is more robust still and has all of the solid qualities of rock. Sublime for covering a wall, where it's enhanced by its bright granite sparkle, it's also very popular for floors thanks to its anti-slip properties. Play around with different faces and alternate shades.

SPLIT PAVINGS



Thickness: 5 cm and 8 cm



Use split paving for your more complicated passage areas for its 100% guaranteed anti-slip properties. Or simply lay the paving down according to a specific design for an original, artistic decorative effect.

'FARMHOUSE' SLABS



Most current thickness:
5 cm



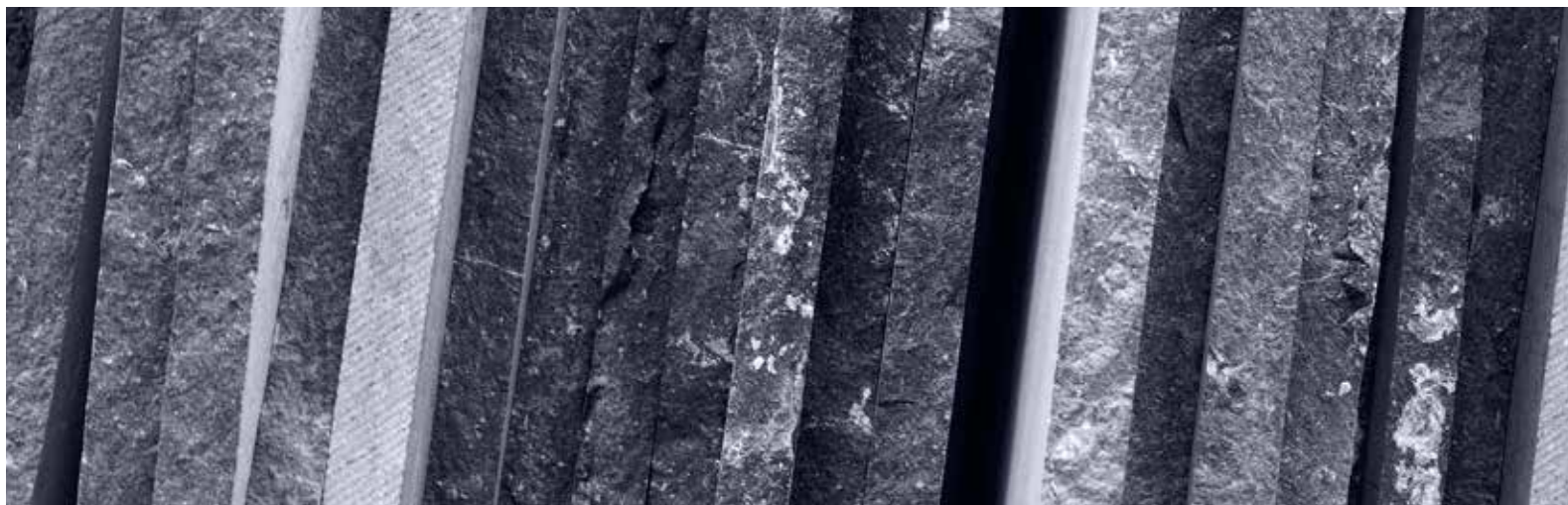
This traditional stone marked the pathways and courtyards of our old farms. Nowadays, with its split edges, it naturally blends in with the most creative outdoors features replacing the cement joints with the simple grass alternative.

PRACTICALLY SPEAKING

WHY CHOOSING FOR BLUE LIMESTONE OF HAINAUT?

Every living being owes its beauty to its unique character and Blue Limestone of Hainaut is no exception. Originally made of once-living material, the crinoids - traces of the fossilised aquatic fauna and flora - that are still visible in the blue stone are the guarantee of its authenticity. The unique properties of Belgian blue limestone make it more resistant than other stones with similar appearance quarried abroad. And unlike imitation blue stones, the blue stone from Belgium takes on a beautiful patina as it grows old.

Only the original Belgian blue stone offers this high resistance to wear and tear and compression. Belgian blue limestone is not affected by water, nor by sharp temperature differences or harsh weather conditions. The qualities present in the natural stone make it unalterable. Blue Limestone of Hainaut is 100% 'Made in Belgium' and has an ecologic fibre. You would be hard pressed to find a better material.



Not many materials can be as easily adapted to architectural projects. Blue Limestone of Hainaut is the ideal stone for both building and decorating. It covers facades, brings structure to patios and is used in both public and private buildings, old and new. It can be used on the ground, on walls and for decorations, throughout your exterior spaces and on every feature in the house.

Blue stone's wide range of grey-blue shades and textures makes it possible for you to integrate it in every type of outdoors space. Its non-

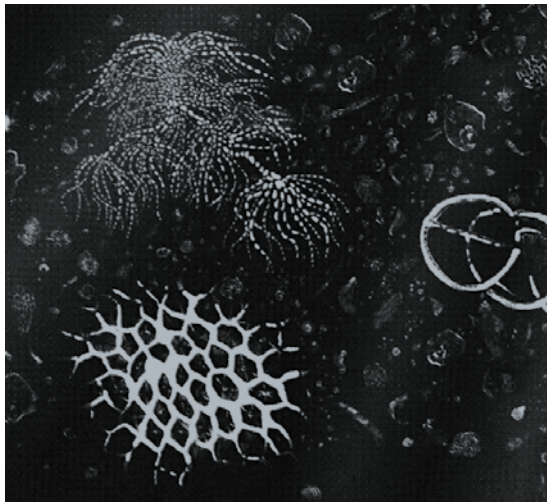
porous structure ensures its longevity and resistance to the elements. It is a timeless stone and therefore easily adaptable to all architectural progress and techniques. This stone can also easily be used together with external insulation.

Durable and naturally beautiful, blue stone is a HEQ (High Environmental Quality) material that ensures thermal, acoustic and hygiene comforts, while its anti-slip properties offer a high level of safety.

HOW CAN YOU BE SURE YOU'RE CHOOSING THE AUTHENTIC BLUE LIMESTONE OF HAINAUT?

As world markets have become more accessible, Belgian blue limestone - or 'petit granit' - has seen increasing competition with arrival of numerous similar stones from Asia and elsewhere. Many of them falsely benefit from the excellent reputation of the authentic Blue Limestone of Hainaut.

How can you see the difference between the real Blue Limestone of Hainaut and its imitation stones or similar stones of a lesser quality? These foreign stones simply do not have the same qualities. Some oxidise over time because they are not adapted to our harsh weather. Or they do not resist against our regular periods of repeated frost and thaw and the bad weather, leaving ugly rings around their ooliths. The golden rule for lovers of authentic, superior quality natural stone - always distrust cheap prices.



AUTHENTIC FOSSILS

The visible presence of fossilised crinoids gives Blue Limestone of Hainaut its incomparable character and charm and is proof of the authenticity of this local stone, which is far more resistant than any other stone of a similar appearance. Take a close look at the stone, touch and compare it. You can feel the authenticity of this living material and that makes all the difference.

Here's a trick to determine the quality - just immerse the stone in water, and if it develops rings and brownish areas with different colours, you can be sure you are dealing with dolomite, which mainly comes from Asia.



PROOF OF PROVENANCE

Here at Carrières du Hainaut® we guarantee the provenance and absolute quality of each of our stones. With every purchase of either finished or half-finished products we provide a document certifying the origin of the stone with a unique code and stamp. Our very strict quality standards exceed even the strictest European requirements. The complete exploitation process of Carrières du Hainaut® is homologated by a technical certificate from the *Union Belge pour l'Agrément technique dans la construction* (UBAtc – Belgian Union for Technical Approval). The performance declarations (CE Marking) for our finished products are available upon request.



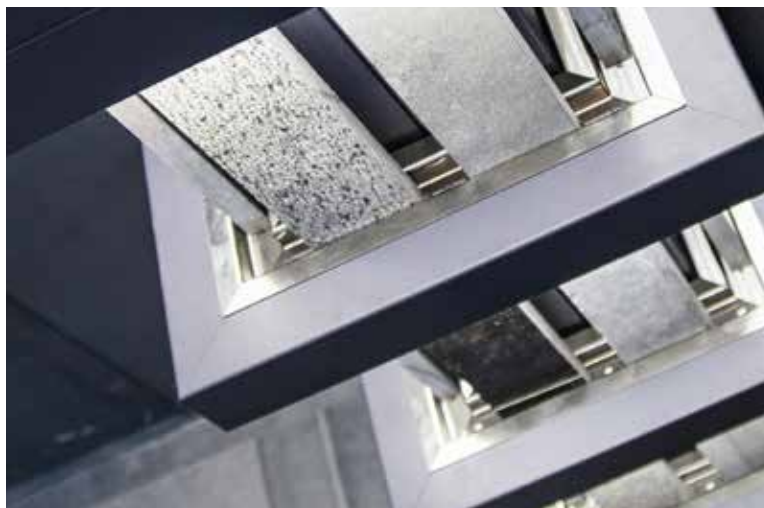
EXCELLENT DISTRIBUTOR NETWORK

Carrières du Hainaut® relies strongly on a network of professionals, which include a large number of stone and marble masons whose professionalism and know-how second to none. Ask for their advice, and allow yourself to be guided by the professionals identified and recommended by the 'Carrières du Hainaut®'.

PRACTICALLY SPEAKING

HOW TO CHOOSE FROM SUCH A WIDE RANGE OF SHADES AND FINISHES?

Each finish gives the stone a particular shade, while a combination of finishes then creates new harmonies. If the choice in terms of finishes is more aesthetic, then certain technical restraints will impose certain limits. For example, to make the correct choice you need to take into account the application intended, and the ideal recommended thickness.



Attention should be paid to the minimum thickness to be used for these structured finishes and the correct fitting system that will have to be used.

CHOOSE THE CORRECT THICKNESS

The fitting system depends on what purpose the stone is used for and on the support on which it will be fitted. This may influence the choice of thickness and size of the stone. Your place of residence also plays a part in deciding which thickness is needed. In Belgium for example, outdoor wall application standards permit a minimum thickness of 3 cm, whereas in France and the Netherlands, a minimum of 2 cm is sufficient.

In the case of ground coverings, whether slabs or paving, the minimum thickness will vary depending on what you're using it for. If the decking is for ornamental purposes or to be walked on, then 3 cm should suffice. For your private garage driveway, a minimum of 5 cm is necessary and even 8 cm for a more used vehicle road or driveways used for vans or any other heavier vehicle.

For any elements which serve more decorative purposes, such as window sills, door frames or wall coverings, aesthetic criteria are of course added to the technical constraints which are specific for each application.

Ask for advice from the professional in charge of production and fitting and they will help you in deciding the thickness needed according to the aesthetic and technical criteria and the rules.

Depending on what you're planning to use the stone for, use the icons listed underneath each finish, from page 40 to 45 of this catalogue, to help you in your choice for the appropriate finish(es). The listed minimum and maximum thicknesses will also help you to decide which one you need. Whatever choice you make, allow yourself to be seduced by our colours and textures.

CHOOSE THE CORRECT FINISH

We recommend choosing clear finishes for outdoors use. Bad weather and sunlight will end up by lightening the darker finishes over time. So for outdoors, it's best to start off with lighter finishes.

The more textured finishes offer not only an aesthetic advantage, but are also a security element due to their anti-slip properties. So when you're thinking of covering floors where people will walk barefoot, we recommend you choose stones with lightly structured finishes, such as the Flamed Blue, EnoSkin® or EnoStyl® Clear. Anti-slip, but still comfortable and soft to touch.

More roughly textured finishes such as Chiselled, Sclyped, Charred, Old cut, Grained Dimpled or other bush-hammered or split products (ClivEno® or BrickEno®) with very popular decorative effects, are perfect for use on walls. They are also anti-slip and offer the necessary grip for use at locations where safety is of the utmost importance, such as steps or sloping driveways. Split pavings or guidance slabs are other options for locations with extra safety requirements.

WHERE CAN YOU FIND THE BELGIAN BLUE LIMESTONE OF HAINAUT?

Carrières du Hainaut® relies on a network of professionals, such as stonecutters and marble masons, whose passion for the natural stone is matched only by their remarkable know-how. A network of professionals who both re-sell the finished products of Carrières du Hainaut® and transform our material into creations that respond to the choice and taste of their customers. Just ask for their advice to bring your project to life.



You can find the distributor nearest to you on our website www.carrieresduhainaut.com.

HOW CAN YOU KEEP YOUR BLUE STONE CLEAN?

Easily enough! Weather will do most of the work for you, and as for indoors use, let the Blue Limestone of Hainaut take the toll of life and allow the patina to develop, adding charm and character over time. A careful wipedown with clear water from time to time will leave the stone looking bright.

Outdoors, we recommend giving the stone a good clean three months **after it has been laid** and after every winter. During these three months, the dust and humidity caused by the fitting process will have been swept away by the wind and rain. If, however, there should be tenacious ugly marks left from during the fitting process or if there is some cement left on the stone, you can always get rid of it by using natural stone cleaning products, such as Lithofin. One single treatment should suffice.

During spring, we recommend you remove vegetation which has gathered on the stone during winter with either a brush and some water mixed with bleach, or with a product from the Litholin range for outdoor use.

Blue Limestone of Hainaut does not require any specific protection. If needed, the areas which are more exposed to marks such as tables and barbeques can be protected preemptively with either Litholin or Imperplex products, or you can protect the stone in the old fashioned way with Marseille soap flakes. Soap and wipe without rinsing and you're ready for summer! One or two treatments should suffice.

As far as marks are concerned, this is how to erase them:

Fat stains:

K2R in spray form (avoid the liquid form which leaves stains). Spray on, let the powder form and work, and then rinse with water.

If the stain has just been formed, let it work for 1 to 2 minutes. If the stain is older, let the powder work for 1 to 2 hours or even more so that it can fully absorb the fat.

If despite this treatment the stain persists, wet the stone and sand it down with very fine grade sandpaper in small, circular movements, and then rinse. Stone which has been treated this way can be a bit lighter in shade, but after time the patina will render its colour uniform again.

Rust spots or brown spots caused by products containing iron sulphate (f.e. weedkiller):

You can either use the old fashioned method: Moisten the stain, sand it down with very fine grade sandpaper in small, circular movements and then rinse. Stone which has been treated this way can be a bit lighter in shade, but after time the patina will render its colour uniform again. Or you can use Rouille-Net from the Lithofin range. The initial reaction of the stone may surprise you, but don't worry - as soon as you have rinsed it, it will regain its normal appearance.

Winter road salt:

Blue Limestone of Hainaut fears nothing. After thaw, rinse with clear water. That's it.

— THE QUARRY —

CARRIÈRES DU HAINAUT®, A SOLID PARTNERSHIP

Carrières du Hainaut® has been extracting and manufacturing the iconic, unique and authentic blue stone for some 125 years. In time, and by permanently developing the expertise and know-how of our teams and by constantly improving the equipment, our company has become the biggest quarry of ornamental limestone in Europe.



A SOCIALLY AND ENVIRONMENTALLY RESPONSIBLE COMPANY

Carrières du Hainaut® subscribes fully to the process of durable and responsible upgrading of local resources. The extraction and transformation processes at Carrières du Hainaut® are completely carried out at one single site in Soignies, Belgium, which is unique in the sector for such a large volume (200,000 m³/year) and allows reducing as much as possible the production's ecological footprint.

Carrières du Hainaut® is committed to offering a natural stone and service of outstanding quality, respecting the environment. The working methods guarantee responsible handling where safety is of principal importance. The by-products such as clay and upper strata are upgraded thanks to our external partners. The source water released during the extraction process supplies nearly 90,000 local inhabitants. More than a thousand solar panels have been installed on the roof of our workshops, generating 225,000kWh/year in electricity used in our production.



A DURABLE AND RESPONSIBLE CHOICE

Blue Limestone of Hainaut is in many ways an ecologically responsible choice.

When you choose for the local blue stone, you choose for an exceptional and local material. While benefiting from this gift of nature in your vicinity, you can at the same time avoid extensive transport which comes at a high price both in terms of energy, ecology and finance.

Choosing our blue stone also encourages the development of timeless know-how, which guarantees an unequalled quality while at the same time helping ensure local long-term employment.

It is also about respecting the environment. Our blue limestone is a durable product like no other: solid, non-porous, and with an extremely long lifespan - the numerous iconic old references are the perfect proof it also offers extensive possibilities for re-use.



A PRODUCT AND SERVICE OF OUTSTANDING QUALITY

Blue Limestone of Hainaut is a noble and natural material whose origins stretch back 345 million years. It is the visible presence of crinoids in the stone that give it its authentic character. Each piece is unique and has successfully passed the very selective sorting procedures before it merits the 'Carrières du Hainaut®' quality label. The extraction and production capacity of Carrières du Hainaut® is such that even the most urgent and demanding requests in terms of quality and relatively short deadlines can always be met. Not only does Carrières du Hainaut® cooperate with a network of distributors that boast an extremely high level of know-how, they also offer architects, designers and consulting firms the services of their own consulting architects in order to creatively work together on your projects. And the commercial teams are fully trained to develop with clients the most appropriate solutions in terms of technical, aesthetic and financial requirements.



CARRIÈRES DU HAINAUT® SOME KEY FIGURES

- > **Employment:** 400 directly; +/- 2,500 indirectly
- > **Actual site:** 235 ha
- > **Yearly extracted volume:** +/- 200 000 m³
- > **Yearly sales:** +/- 40 000 m³
- > **Markets:** 75 % in Belgium, 25 % is for export
(France, the Netherlands, Germany and worldwide)

VISIT US

Would you like to know more about Blue Limestone of Hainaut, its origins and how it is quarried? Just contact the Office du Tourisme at Soignies to organise a visit. You can get in touch with them on either tel.: **+32 (0) 67 34 73 76** or via e-mail on **tourisme@soignies.be**

If you wish to organise a visit within the framework of a specific project, you may contact Carrières du Hainaut® directly by sending an e-mail to: **info@carrieresduhainaut.com**



CARRIÈRES DU HAINAUT

Rue de Cognebeau, 245 | B-7060 Soignies | Belgium
Tel.: + 32 (0)67 34 78 00 | Fax: + 32 (0)67 33 00 59
www.carrieresduhainaut.com | info@carrieresduhainaut.com